

Qualgenix

High-quality, low-cost, spine implant systems

Mont Blanc



Twin Peaks



Blue Mountain



Ayers Rock





SPINE IMPLANT SYSTEMS

Qualgenix offers premium-quality spine implants and instruments at a significant discount.

Our four spine systems – Mont Blanc, Twin Peaks, Blue Mountain and Ayers Rock – meet the requirements for the majority of cervical, thoracic and lumbar spine procedures.

We are committed to supplying our customers the highest-quality products. All our spine implant products have received FDA clearance, meeting and exceeding rigorous material, manufacturing and testing standards required of all spine implants.

Qualgenix delivers significant savings without sacrificing the quality of care. Our products have a strong track record of success, with thousands of successful procedures performed annually worldwide.

| | | |
|-----------------------|----------------------|----------|
| pedicle screw | Mont Blanc | |
| | - About | pg 1-2 |
| | - Instruments | pg 3-4 |
| PLIF cage | Twin Peaks | |
| | - About | pg 5-7 |
| | - Instruments | pg 8 |
| cervical plate | Blue Mountain | |
| | - About | pg 9-11 |
| | - Instruments | pg 12 |
| cervical cage | Ayers Rock | |
| | - About | pg 13-15 |
| | - Instruments | pg 16 |

Message from the President

Our healthcare system is facing unprecedented financial challenges as the cost of care climbs towards unsustainable levels. Caregivers and hospitals are feeling the pain, and need a solution to declining reimbursements and reduced budgets.

Qualgenix is here to be part of the solution.

We provide products with the best value, maintaining quality of care while finding needed savings.

We do this by eliminating legacy charges for old, expired patents and by innovating in product delivery and support. Stripping away unneeded, expensive support services, we customize our service levels to accommodate what you, our customer, asks for:

- *Low-service, direct buying at the lowest possible price – for accounts that no longer need rep support.*
- *High-service support with significant savings – for customers who require more support with OR preparation, product and procurement.*

*Please contact us to discuss our current and future products. **We can help you find significant savings on high-quality products.***

— Richard Deslauriers, M.D.
Founder, President and CEO
Qualgenix, LLC



Mont Blanc

pedicle screw system



MONT BLANC SPINAL SOLUTION

A tradition and experience in spine implant manufacturing



monobloc screw



polyaxial screw



reduction screw

SAFE, RELIABLE DESIGN

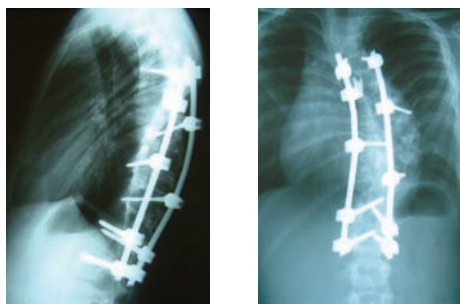
- Implants and instruments have been designed to be efficient, safe and easy to use
- Produced in hi-tech European spine implant facilities
- Used by experienced spine surgeons in thousands of procedures worldwide
- Cleared by the FDA – meets or exceeds the same standards as other pedicle fixation systems

SIMPLICITY MEANS EFFICACY

- Intuitive design feels natural
- Efficient and easy-to-implant system
- Simple, effective locking system

VERSATILITY

- Polyaxial (up to 50° range of motion), monobloc and reduction screws
- 4 to 8mm screws from 25 to 55mm long
- 5.5mm titanium alloy rods from 40 to 500mm long



INDICATIONS

- Non-cervical pedicle fixation (T1 to S1)
- Degenerative disc disease, spinal stenosis, tumor, fracture, trauma, curvatures, revision, spondylolisthesis, pseudoarthrosis

“We simply need
the most efficient system.
Easy to use and safe for patients as well!”

– spine surgeons



monobloc screws

All the screws are in titanium alloy. All measurements are in millimeters (mm)



Ø4mm

- MB1MS425-US ▶ L 25mm
- MB1MS430-US ▶ L 30mm
- MB1MS435-US ▶ L 35mm
- MB1MS440-US ▶ L 40mm

Ø5mm

- MB1MS530-US ▶ L 30mm
- MB1MS535-US ▶ L 35mm
- MB1MS540-US ▶ L 40mm
- MB1MS545-US ▶ L 45mm
- MB1MS550-US ▶ L 50mm

Ø6mm

- MB1MS635-US ▶ L 35mm
- MB1MS640-US ▶ L 40mm
- MB1MS645-US ▶ L 45mm
- MB1MS650-US ▶ L 50mm
- MB1MS655-US ▶ L 55mm

Ø7mm

- MB1MS735-US ▶ L 35mm
- MB1MS740-US ▶ L 40mm
- MB1MS745-US ▶ L 45mm
- MB1MS750-US ▶ L 50mm



monobloc reduction screws

All the screws are in titanium alloy.



Ø5mm

- MB1MSS540-US ▶ L40mm
- MB1MSS545-US ▶ L45mm
- MB1MSS550-US ▶ L50mm

Ø6mm

- MB1MSS635-US ▶ L35mm
- MB1MSS640-US ▶ L40mm
- MB1MSS645-US ▶ L45mm
- MB1MSS650-US ▶ L50mm
- MB1MSS655-US ▶ L55mm

Ø7mm

- MB1MSS735-US ▶ L35mm
- MB1MSS740-US ▶ L40mm
- MB1MSS745-US ▶ L45mm
- MB1MSS750-US ▶ L50mm



polyaxial screws

All the screws are in titanium alloy.



Ø4mm

- MB1PS425-US ▶ L 25mm
- MB1PS430-US ▶ L 30mm
- MB1PS435-US ▶ L 35mm
- MB1PS440-US ▶ L 40mm

Ø5mm

- MB1PS530-US ▶ L 30mm
- MB1PS535-US ▶ L 35mm
- MB1PS540-US ▶ L 40mm
- MB1PS545-US ▶ L 45mm
- MB1PS550-US ▶ L 50mm

Ø6mm

- MB1PS635-US ▶ L 35mm
- MB1PS640-US ▶ L 40mm
- MB1PS645-US ▶ L 45mm
- MB1PS650-US ▶ L 50mm
- MB1PS655-US ▶ L 55mm

Ø7mm

- MB1PS730-US ▶ L 30mm
- MB1PS735-US ▶ L 35mm
- MB1PS740-US ▶ L 40mm
- MB1PS745-US ▶ L 45mm
- MB1PS750-US ▶ L 50mm

Ø8mm

- MB1PS830-US ▶ L 30mm
- MB1PS835-US ▶ L 35mm
- MB1PS840-US ▶ L 40mm
- MB1PS845-US ▶ L 45mm
- MB1PS850-US ▶ L 50mm



polyaxial reduction screws

All the screws are in titanium alloy.



Ø5mm

- MB1PSS540-US ▶ L40mm
- MB1PSS545-US ▶ L45mm
- MB1PSS550-US ▶ L50mm

Ø6mm

- MB1PSS635-US ▶ L35mm
- MB1PSS640-US ▶ L40mm
- MB1PSS645-US ▶ L45mm
- MB1PSS650-US ▶ L50mm
- MB1PSS655-US ▶ L55mm

Ø7mm

- MB1PSS735-US ▶ L35mm
- MB1PSS740-US ▶ L40mm
- MB1PSS745-US ▶ L45mm
- MB1PSS750-US ▶ L50mm



locking screw

The universal locking screws are in titanium alloy.

MB1LS-US



rods

All the rods are in titanium alloy.

5.5mm

- MB1R5540-US ▶ L 40mm
- MB1R5550-US ▶ L 50mm
- MB1R5564-US ▶ L 64mm
- MB1R5578-US ▶ L 78mm
- MB1R5592-US ▶ L 92mm

- MB1R55106-US ▶ L 106mm
- MB1R55120-US ▶ L 120mm
- MB1R55132-US ▶ L 132mm
- MB1R55144-US ▶ L 144mm

- MB1R55158-US ▶ L 158mm
- MB1R55185-US ▶ L 185mm
- MB1R55250-US ▶ L 250mm
- MB1R55500-US ▶ L 500mm

container implants

C1MB04-US



level 1



level 2

container instruments

C1MB01-US



level 1



level 2

INSTRUMENTS

1. SCREW PREPARATION



Awl with stop 148PRA1-US



Lumbar curved pedicle probe 004PP1-US



Lumbar straight pedicle probe 102PPS1-US



Thoracic straight pedicle probe
229PPTS1-US



Thoracic curved pedicle probe
230PPTC1-US



Feeler probe 003PF2-US



Quick Connect Ratcheting Handle
314HRMR1-US



Quick Connect
Ratcheting T Handle
313HRMR1-US



Tap, diameter 4mm 093P4T1-US

Tap, diameter 5mm 094P5T1-US

Tap, diameter 6mm 095P6T1-US

Tap, diameter 7mm 096P7T1-US

Tap, diameter 8mm 147P8T1-US

2. SCREW PLACEMENT



Quickconnect polyaxial screwdriver
with holding sleeve 092SPA4-US



Long nut holder 098HNL1-US

3. ROD CONTOURING AND INSERTION



Rod holder 018HR2-US



Rod bender 035BR1-US



Rod pusher 028IOP1-US

4. ROD REDUCTION



Forceps rocker 029ICP1-US



Rod reducer 034IRP1-US

5. CORRECTION



Compression clamp 016CC1-US



Distraction clamp 057DC1-US



Bender in situ, right 036BIR1-US



Bender in situ, left 037BIL1-US



Rod clamp 149HCS1-US

6. FINAL TIGHTENING/ SET SCREWS



T set screwdriver, 4.5mm hex
009ST1-US



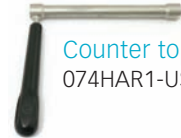
Quick connect T handle 027HRM3-US



Quick connect set screwdriver, hex 4.5mm
082STA1-US



Quick connect torque limiter 083STLA2-US



Counter torque lever
074HAR1-US

OPTIONAL INSTRUMENTS



Awl 001PST1-US
Ring stop for awl 006PSTR1-US



Sharp tip with tap 002PSTT1-US



Curette small 005PCS1-US



Quick connect monoaxial screwdriver
162SMA1-US



Quick connect monoaxial screwdriver
with holding sleeve 162SMA3-US



Monoaxial screwdriver 010SM2-US



Quick connect polyaxial screwdriver
092SPA2-US



Polyaxial screwdriver 011SP2-US



Nut holder, short 017HN1-US



Holder for reduction screw 104HTS1-US



Spacer for reduction screw 101SS1-US



Coronal bender, right
254BCR1-US



Coronal bender, left
255BCL1-US

Bolt cutter 11-03-57-18-04-US



Twin Peaks PLIF cage system



TWIN PEAKS CAGE

Posterior lumbar interbody fusion



Peek® cages length
20 and 25mm

SAFE, RELIABLE DESIGN

- Designed and used by experienced spine surgeons worldwide
- Produced in hi-tech European spine implant facilities
- Cleared by the FDA – meets or exceeds the same standards as other PLIF cages

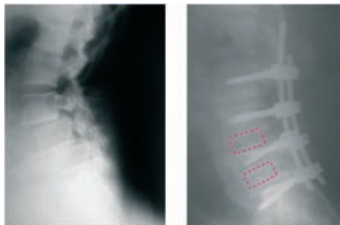
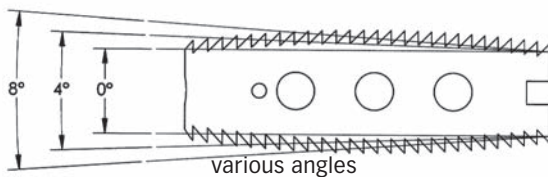
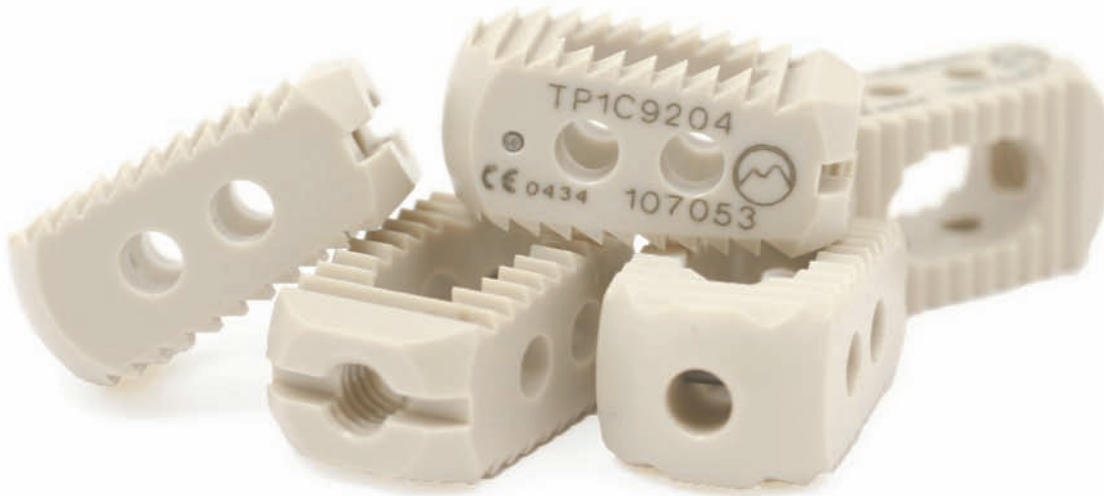
A clever design that approaches disc space anatomy

- Improves primary stability
- Prevents secondary pullout
- Favors bone ingrowth – quick and reliable arthrodesis
- Accurate intervertebral space restoration
- Restores physiological lordosis

VERSATILE SIZE RANGE

- 2 lengths – 20mm and 25mm
- 3 angles – 0°, 4°, 8°
- 7 heights – 8mm through 14mm





pre op

post op

SIMPLICITY AND EFFICACY

- PLIF is a well recognized and accepted technique to achieve arthrodesis

RELIABILITY

- Efficient implant design close to natural anatomy
- PEEK® material is recognized for its properties:
 - nearing natural bone elasticity
 - radiolucency permits observation of bone growth
 - radiopaque markers assist with positioning

INDICATIONS

- Degenerative disc disease at one level or two contiguous levels (L2 to S1)
- To be used with supplemental fixation such as Qualgenix Mont Blanc

“A cage design
we feel comfortable with,
easy to use as well; it is safer for the patients”

— spine surgeons

lumbar cage

material: PEEK by Invibio



lumbar cage size

L : 20mm

L : 25mm

| | | | | | | | |
|-----------------|----|--------------|--------------|--------------|--------------|--------------|--------------|
| Twin Peaks Cage | 8 | TP1C8200-US | TP1C8204-US | TP1C8250-US | TP1C8254-US | | |
| Twin Peaks Cage | 9 | TP1C9200-US | TP1C9204-US | TP1C9250-US | TP1C9254-US | TP1C9258-US | |
| Twin Peaks Cage | 10 | TP1C10200-US | TP1C10204-US | TP1C10208-US | TP1C10250-US | TP1C10254-US | TP1C10258-US |
| Twin Peaks Cage | 11 | TP1C11200-US | TP1C11204-US | TP1C11208-US | TP1C11250-US | TP1C11254-US | TP1C11258-US |
| Twin Peaks Cage | 12 | TP1C12200-US | TP1C12204-US | TP1C12208-US | TP1C12250-US | TP1C12254-US | TP1C12258-US |
| Twin Peaks Cage | 13 | | | | TP1C13250-US | TP1C13254-US | TP1C13258-US |
| Twin Peaks Cage | 14 | | | | TP1C14250-US | TP1C14254-US | TP1C14258-US |

All measurements are in millimeters (mm)

INSTRUMENTS



distractor

| | | |
|-------------------|-----|--------------|
| Lumbar distractor | 8S | 050DL8S1-US |
| Lumbar distractor | 9S | 051DL9S1-US |
| Lumbar distractor | 10S | 052DL10S1-US |
| Lumbar distractor | 11M | 053DL11M1-US |
| Lumbar distractor | 12M | 054DL12M1-US |
| Lumbar distractor | 13L | 055DL13L1-US |
| Lumbar distractor | 14L | 056DL14L1-US |



impactor

025HLP2-US



holder

026HLC1-US

graft pusher

076IGL1-US



reamer

| | | |
|---------------|-----|--------------|
| Lumbar reamer | 8S | 064RL8S1-US |
| Lumbar reamer | 9S | 065RL9S1-US |
| Lumbar reamer | 10S | 066RL10S1-US |
| Lumbar reamer | 11M | 067RL11M1-US |
| Lumbar reamer | 12M | 068RL12M1-US |
| Lumbar reamer | 13L | 069RL13L1-US |
| Lumbar reamer | 14L | 070RL14L1-US |



ring curette

| | | |
|--------------|-----|------------|
| Ring curette | 5mm | 008PRC1-US |
| Ring curette | 7mm | 078PRC1-US |
| Ring curette | 9mm | 079PRC1-US |



final impactor

033IL2-US

instruments



container

C1TP02-US

implants



removable handle

Quick connect

027HRM3-US



filling socket

072FL2-US



Blue Mountain cervical plate system



IMPROVING

Flexibility benefits your patients

SAFE, RELIABLE DESIGN

- 1.8mm thick
- Thinner design and use of titanium alloy provides flexibility
- Distal polyaxial screws – 10° angulation

① RESPECT WOLFF'S LAW

- Minimal space requirement
- Maximum vision of the graft site
- Thinner plate reduces the risk of dysphonia

② SUPERTHIN PROFILE – 1.8mm

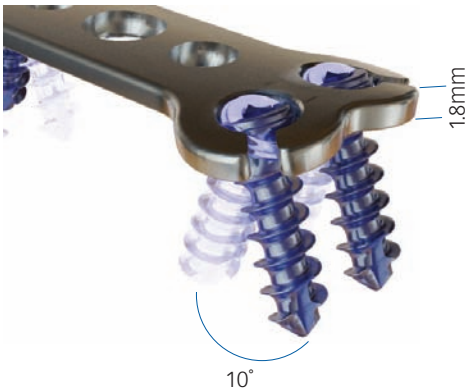
- Minimal space requirement
- Maximum vision of the graft site
- Thinner plate reduces the risk of dysphonia

③ FASTER SETTING

- Innovative screw locking – simple to engage
- Innovative anti-pullout and polyaxial movement

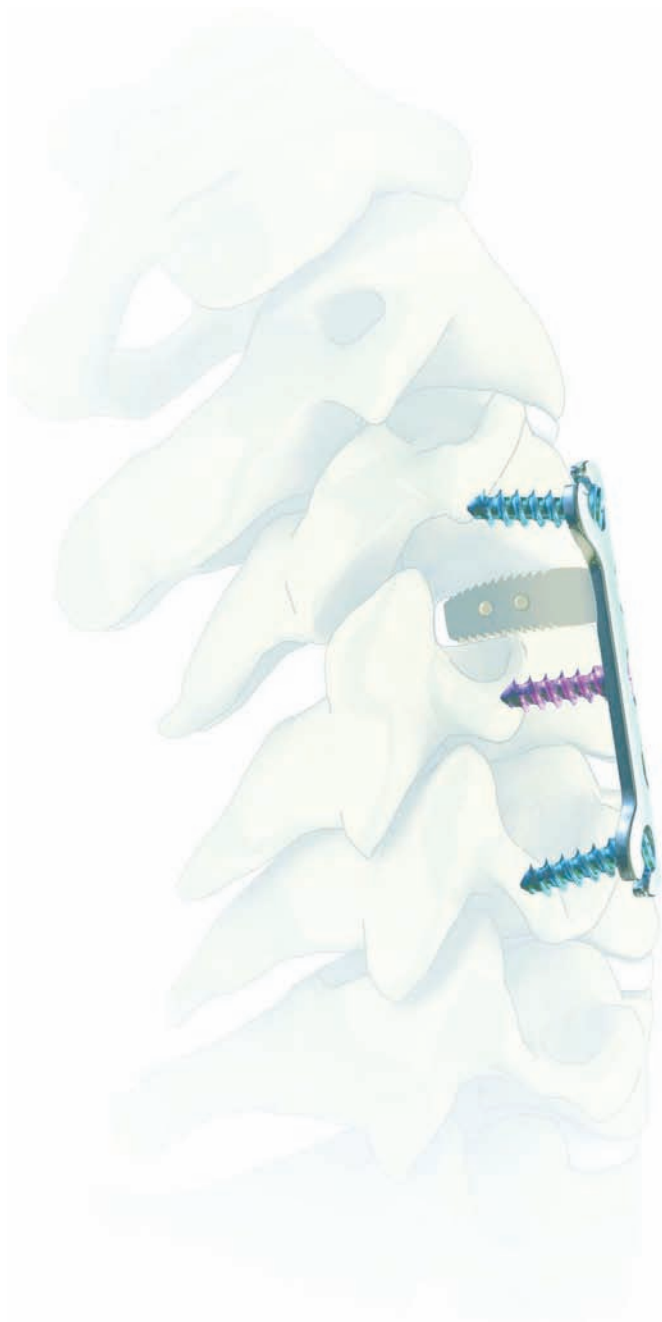
④ MULTIPLE FIXATION SOLUTIONS

- Ideal for procedures of one to four levels
- Ten plate lengths from 24 to 93 mm



FUSION

by  **Qualgenix**



Distal screw



Distal fixation

Central screw



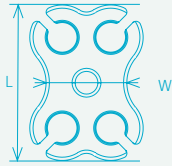
Central fixation

INDICATIONS

Anterior cervical fixation (C2-C7):

- degenerative disc disease, spinal stenosis, tumor, fracture, trauma, deformity, revision, spondylolisthesis, pseudoarthrosis

It's not always obvious
who is the smartest.
But it's smart to be the thinnest.



cervical plate

| | Length | Thickness | Width | Level |
|-----------|--------|-----------|-------|-------|
| BM2P24-US | ▶ 24 | 1.8 | 12.5 | 1 |
| BM2P29-US | ▶ 29 | 1.8 | 9.8 | |
| BM2P34-US | ▶ 34 | 1.8 | 9.8 | |
| BM2P38-US | ▶ 38 | 1.8 | 10.8 | 2 |
| BM2P41-US | ▶ 41 | 1.8 | 10.8 | |
| BM2P46-US | ▶ 46 | 1.8 | 10.8 | 3 |
| BM2P50-US | ▶ 50 | 1.8 | 10.8 | |
| BM2P58-US | ▶ 58 | 1.8 | 10.8 | 4 |
| BM2P66-US | ▶ 66 | 1.8 | 10.8 | |
| BM2P75-US | ▶ 75 | 1.8 | 10.8 | |
| BM2P93-US | ▶ 93 | 1.8 | 10.8 | |

All measurements in millimeters (mm)

distal screws

| | ØA | L | | ØA | L |
|-------------|-----|----|-------------|-------|----|
| BM1S4012-US | ▶ 4 | 12 | BM1S4512-US | ▶ 4.5 | 12 |
| BM1S4014-US | ▶ 4 | 14 | BM1S4514-US | ▶ 4.5 | 14 |
| BM1S4016-US | ▶ 4 | 16 | BM1S4516-US | ▶ 4.5 | 16 |
| BM1S4018-US | ▶ 4 | 18 | BM1S4518-US | ▶ 4.5 | 18 |
| BM1S4020-US | ▶ 4 | 20 | BM1S4520-US | ▶ 4.5 | 20 |



central screws

| | ØA | L | | ØA | L |
|--------------|-----|----|--------------|-------|----|
| BM1SC4012-US | ▶ 4 | 12 | BM1SC4512-US | ▶ 4.5 | 12 |
| BM1SC4014-US | ▶ 4 | 14 | BM1SC4514-US | ▶ 4.5 | 14 |
| BM1SC4016-US | ▶ 4 | 16 | BM1SC4516-US | ▶ 4.5 | 16 |
| BM1SC4018-US | ▶ 4 | 18 | BM1SC4518-US | ▶ 4.5 | 18 |

All implants are made of implantable titanium TA6V

INSTRUMENTS



Caspas distractor
058DCC1-US
Caspas pins
Lg12 108D12S1-US
Lg14 109D14S1-US



Measuring caliper
156DCAL2-US



Sizer, cervical plate

| | |
|--------------|--------------|
| 134D24CP2-US | 139D50CP2-US |
| 135D29CP2-US | 140D58CP2-US |
| 136D34CP2-US | 141D66CP2-US |
| 300D38CP2-US | 142D75CP2-US |
| 137D41CP2-US | 143D93CP2-US |
| | 138D46CP2-US |



Holder for cervical plate
116HPC1



Holder for temporary pin
118HTP1



Temporary pin, cervical
117HCTP1



Drill guide,
cervical plate
119HCG25CT1-US



Stop for drill

- Lg 12 150H12S1-US
- Lg 14 151H14S1-US
- Lg 16 152H16S1-US
- Lg 18 153H18S1-US
- Lg 20 154H20S1-US



Drill bit

- Ø 2.4 120P24D1-US
- Ø 2.9 121P29D1-US



Tap for cervical screws

- Ø 4.0 112P40CT1-US
- Ø 4.5 113P45CT1-US



Instruments + implants
Complete container
C1BM01-US



Awl, cervical
111PSTC1-US



Plate bender
115BP1-US



Screwdriver, retaining
114SCP2-US



Extractor
155HTR2-US



Rack instruments M2BM02-US
Rack implants M2BM01-US



Ayers Rock cervical cage system



AYERS ROCK CERVI

A new cage designed for cervical spine arthrodesis

SAFE, RELIABLE DESIGN

- Designed and used by experienced spine surgeons worldwide
- Produced in hi-tech European spine implant facilities
- Cleared by the FDA – meets or exceeds the same standards as other anterior cervical cages

A clever design that approaches disc space anatomy:

- Improves primary stability
- Anti-pullout grooves – no secondary motion
- Favors bone ingrowth – quick & reliable arthrodesis
- Accurate intervertebral space restoration
- Respect / restore cervical curvature

VERSATILE SIZE RANGE

- 3 sizes – S, M, L
- 4 heights – 5mm through 8mm
- 5° angulation improves lordosis repair

SIMPLICITY and EFFICACY

- ACDF is a well recognized and accepted technique to achieve arthrodesis

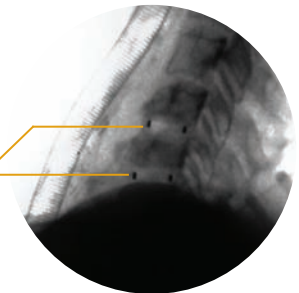


CAL CAGE by Qualgenix



RELIABILITY

- Efficient implant design close to natural anatomy
- PEEK® material is recognized for its properties:
 - nearing natural bone elasticity
 - radiolucency permits observation of bone growth
 - radiopaque markers assist with positioning)



INDICATIONS

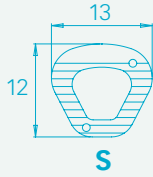
- Degenerative disc disease with accompanying radicular symptoms at one level from C2-T1
- To be used with supplemental fixation such as Qualgenix Blue Mountain ACP

“Provide constancy in results
is our mission. Simplicity and
versatility are part of the design rationale.”

— Prof. Brosetta and Dr. Guillermo

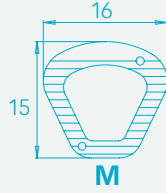


cervical cage material: PEEK optima by Invibio



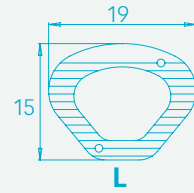
Ayers Rock cage size S

- Cage S height 5 AR2C51213-US
- Cage S height 6 AR2C61213-US
- Cage S height 7 AR2C71213-US



Ayers Rock cage size M

- Cage M height 5 AR2C51516-US
- Cage M height 6 AR2C61516-US
- Cage M height 7 AR2C71516-US
- Cage M height 8 AR2C81516-US



Ayers Rock cage size L

- Cage L height 5 AR2C51519-US
- Cage L height 6 AR2C61519-US
- Cage L height 7 AR2C71519-US
- Cage L height 8 AR2C81519-US

INSTRUMENTS

rasp



| rasp | dimensions | reference |
|--------|------------|-------------|
| Rasp S | height 5 | 060RC5S2-US |
| Rasp S | height 6 | 061RC6S2-US |
| Rasp S | height 7 | 062RC7S2-US |
| Rasp S | height 8 | 063RC8S2-US |

sizer



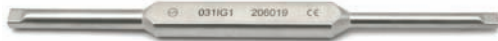
| size | dimensions | reference |
|--------|------------|-------------|
| Size S | height 5 | 041DC5S1-US |
| Size S | height 6 | 042DC6S1-US |
| Size S | height 7 | 133DC7S1-US |
| Size M | height 5 | 043DC5M1-US |
| Size M | height 6 | 044DC6M1-US |
| Size M | height 7 | 045DC7M1-US |
| Size M | height 8 | 296DC8M1-US |
| Size L | height 5 | 046DC5L1-US |
| Size L | height 6 | 047DC6L1-US |
| Size L | height 7 | 048DC7L1-US |
| Size L | height 8 | 049DC8L1-US |

shaft 024HD1-US



Quick connection on rasps and sizers

graft pusher 031IG1-US



impactor 022HCP2-US



container



implants
M2AR01-US



instruments C1AR01-US



holder 023HCC1-US

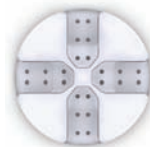


final impactor 032IC2-US



filling socket

071FC2-US





In addition to being your solution for high-quality, low-cost spine systems, please ask us how we can also be part of your solution for high-quality, low-cost wound care management.



Introducing the next generation flexible canister wound care system

- Compact
- Reduced Treatment Cost
- Universal Compatibility
- Patient Preferred



www.woundrxmedical.com



25 Depot Hill Road
Building One, Suite 104
Southbury, CT, 06488

tel: 203-405-6402
info@qualgenix.com

www.qualgenix.com